


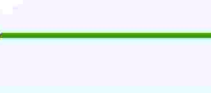



Welcome Bumping Lake Sno-Park Groomed Trail System

Explanation

-  Non-Motorized Sno-Park
-  Groomed Ski Trail
-  Marked Ski Route
-  Road
-  Wilderness Area

Bumping Lake Trail System has 5.1 kilometers (3.2 miles) of groomed cross country ski trails and 1.6 kilometers (1 mile) of ungroomed ski trails.

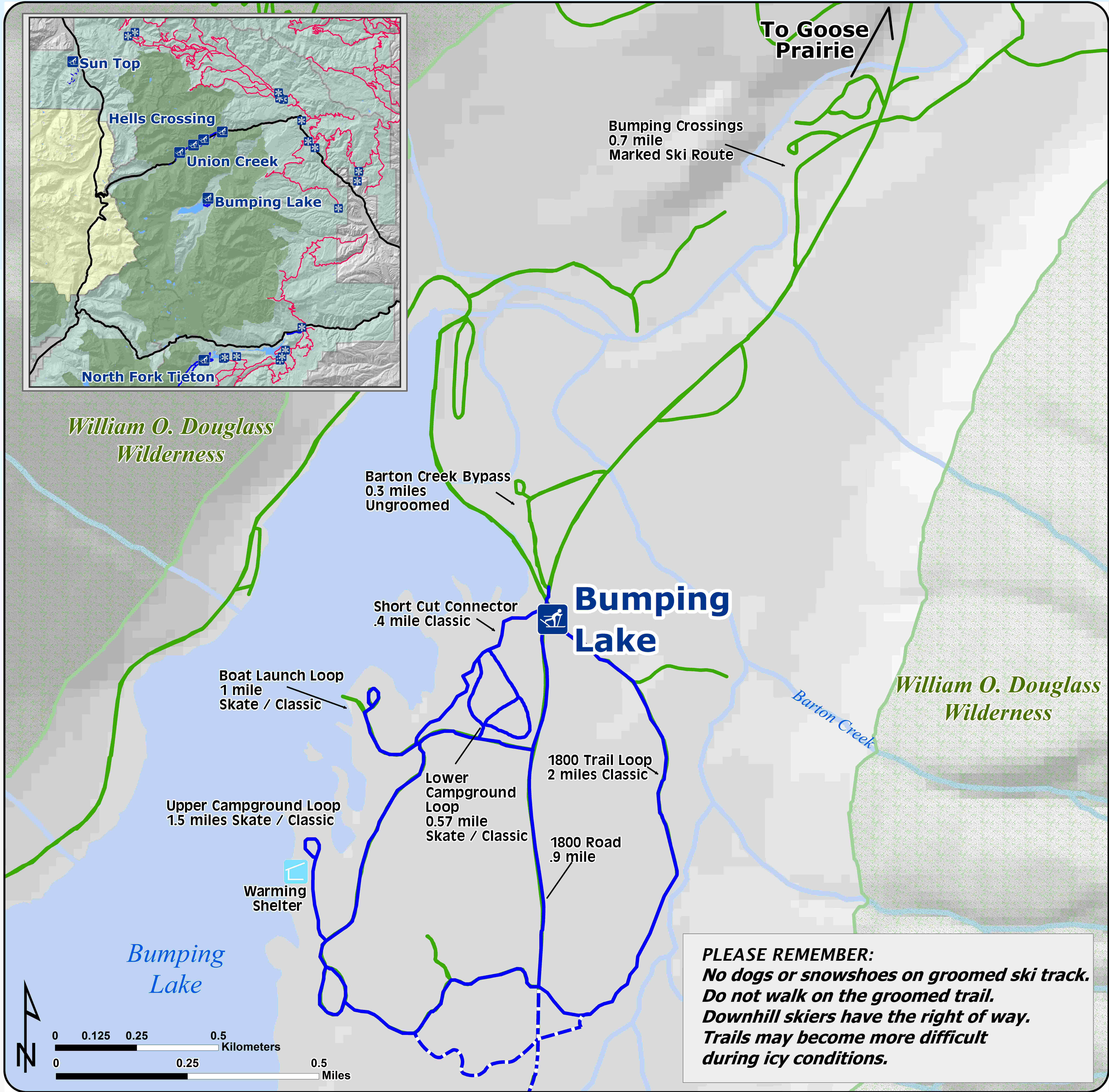
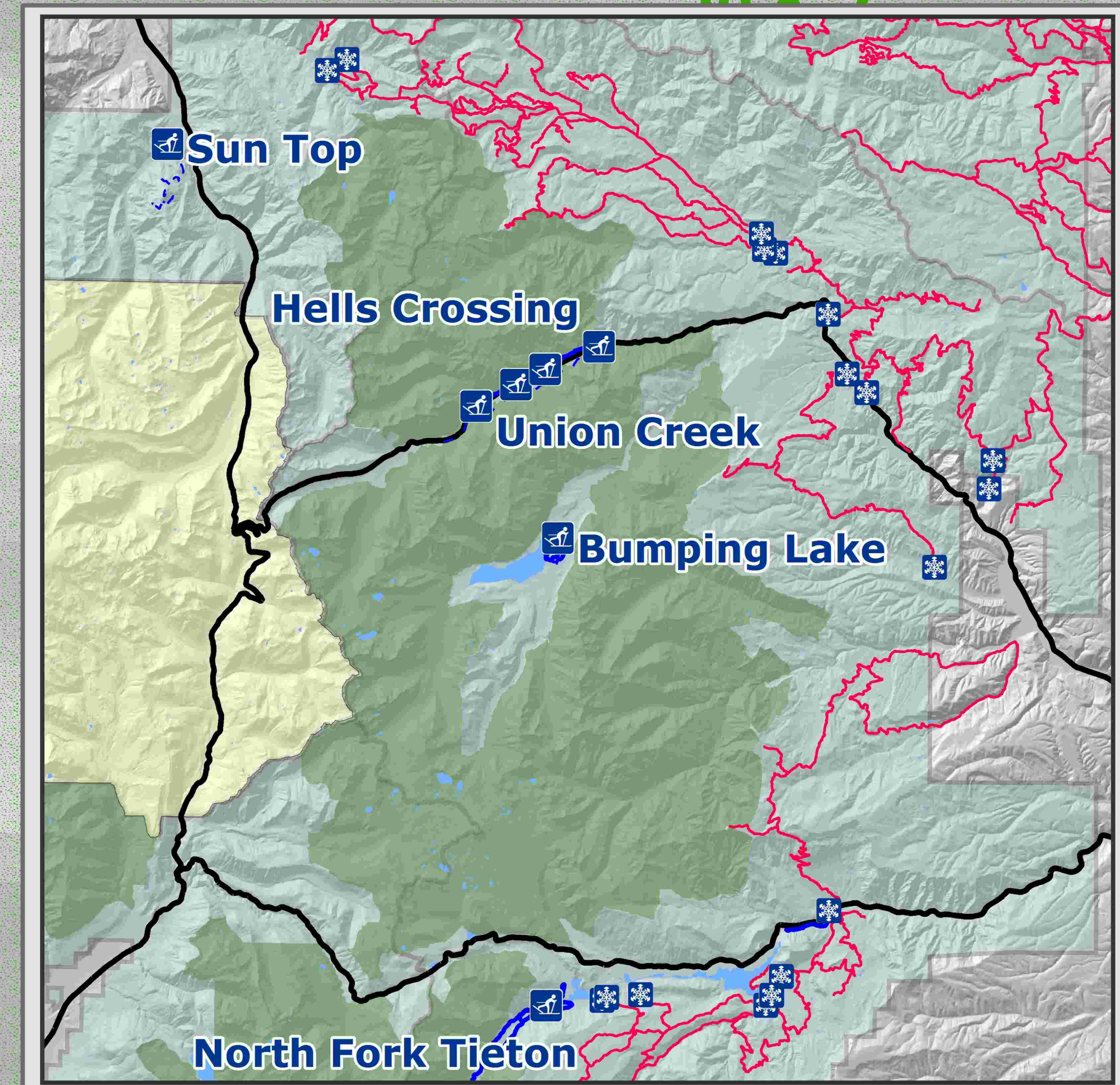
Snow grooming equipment may be on the trail at any time.

Trail grooming schedules may change without notice due to snow conditions, temperatures, equipment breakdowns, etc.

Be aware of potential avalanche danger, check www.nwac.us before you leave home.

*Trail grooming schedules and maps at www.parks.wa.gov/winter
Please report errors or comments to: winter@parks.wa.gov*

**For Emergency Call 911
Yakima Co. Sheriff 509-574-2500**



PLEASE REMEMBER:
No dogs or snowshoes on groomed ski track.
Do not walk on the groomed trail.
Downhill skiers have the right of way.
Trails may become more difficult during icy conditions.

*William O. Douglass
Wilderness*

*William O. Douglass
Wilderness*

*Bumping
Lake*

To Goose
Prairie

Bumping Crossings
0.7 mile
Marked Ski Route

Barton Creek Bypass
0.3 miles
Ungroomed

Short Cut Connector
.4 mile Classic

Boat Launch Loop
1 mile
Skate / Classic

Upper Campground Loop
1.5 miles Skate / Classic

Warming
Shelter

Lower
Campground
Loop
0.57 mile
Skate / Classic

1800 Trail Loop
2 miles Classic

1800 Road
.9 mile

0 0.125 0.25 0.5
Kilometers

0 0.25 0.5
Miles